



## A Data Space for the Industrial Companies of the MONDRAGON Corporation

**Michel Iñigo**  
**Senior Innovation & Technology Manager**  
[minigo@mondragoncorporation.com](mailto:minigo@mondragoncorporation.com)

**Iñaki Paz**  
**Innovation Project Manager |**  
**Data Space Lead**  
[ipaz@lksnext.com](mailto:ipaz@lksnext.com)



General Initiative to set up a **generic federated data space** within the scope of the MONDRAGON Corporation to be subsequently applicable to various sectors

# MONDRAGON Automotive

fagorederlandgroup TAFALLA IRON FOUNDRY MAPSA @cenarro cikautxo BATZ

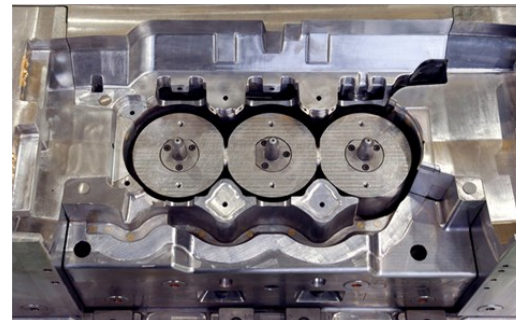
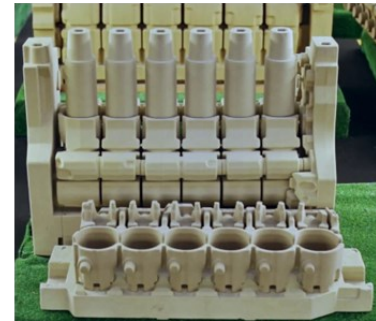
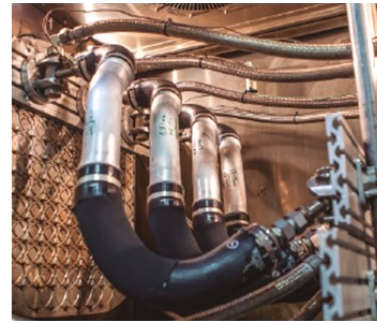
MATRICI

AK aurrenak

Loramendi

MB SISTEMAS

MAIER





# MONDRAGON Capital Goods / Components



## BENEFITS

- Improve productivity and operational efficiency
- Facilitate the development of new business models, products, and services
- Improve supply chain efficiency
- Enable Smart Factories and the transition to Green Economy
- Boosting AI Spaces





- We are the **biggest professional services group with Basque capital.**
- LKS Next is a cooperative company that belongs to **Mondragón.**
- **With more than 33 years of history** as an independent consultant company.
- More than 720 professionals in **multiple disciplines.**
- **Comprehensive Industrial Service** orientation
- Continued presence in the **public sector and large business groups.**



DSP Protocol  
DCP Protocol  
...

- Standards Reference Impl.
- MVD
- Protocol TCKs

Focuses on connector  
tecnology and its  
components

MXD

Extends  
Connector Base

Umbrella

Data Space  
Infrastructure



# Eclipse Tractus-X

Where we build secure, self-sovereign & open collaborative dataspace!

 **Mondragon-X** is based on



**LKS**  
Next

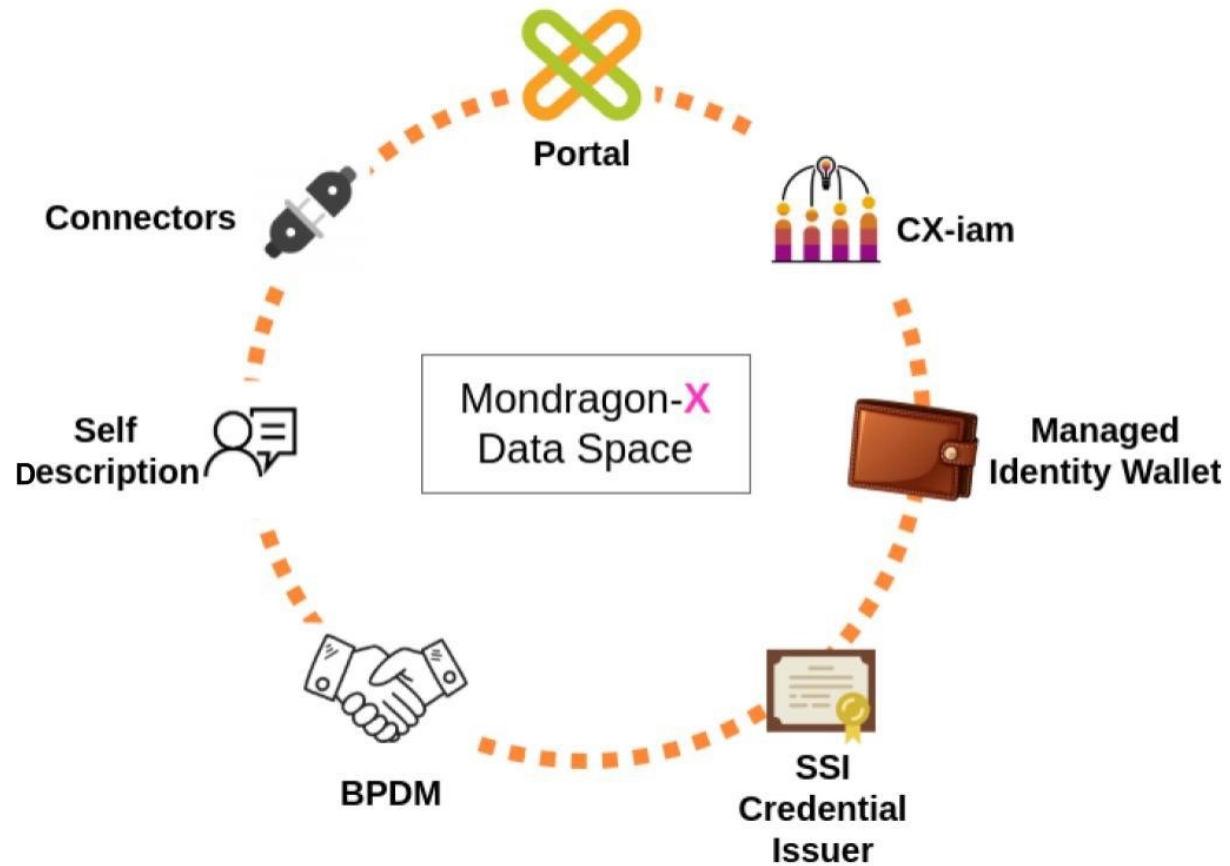
is contributing on its development, with currently 2 active committers and several contributors, along with others from

 **MONDRAGON**  
UNIBERTSITATEA

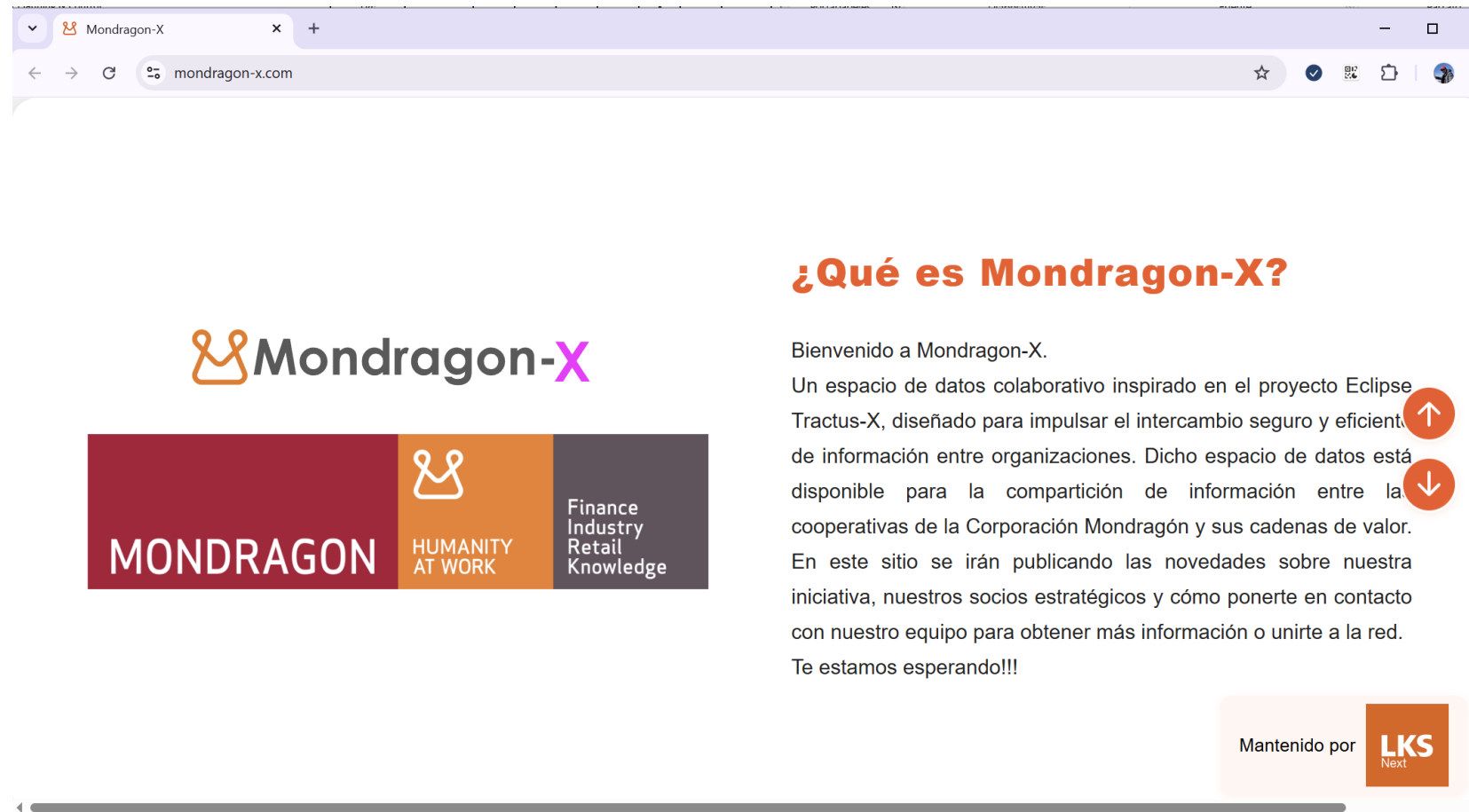
 **ikerlan**

 **ID EKO**





 **Eclipse Tractus-X**



<https://mondragon-x.com/> IS OPERATIONAL AND ONLINE!

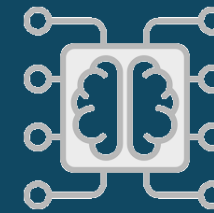
For Data Sharing Demonstration purposes for Mondragon Corporation Cooperatives!

# USE CASES



## PCF

Product CO2 footprint  
calculation



## Federated Learning

Multiple entities collaboratively  
train a model without sharing  
their sensitive data

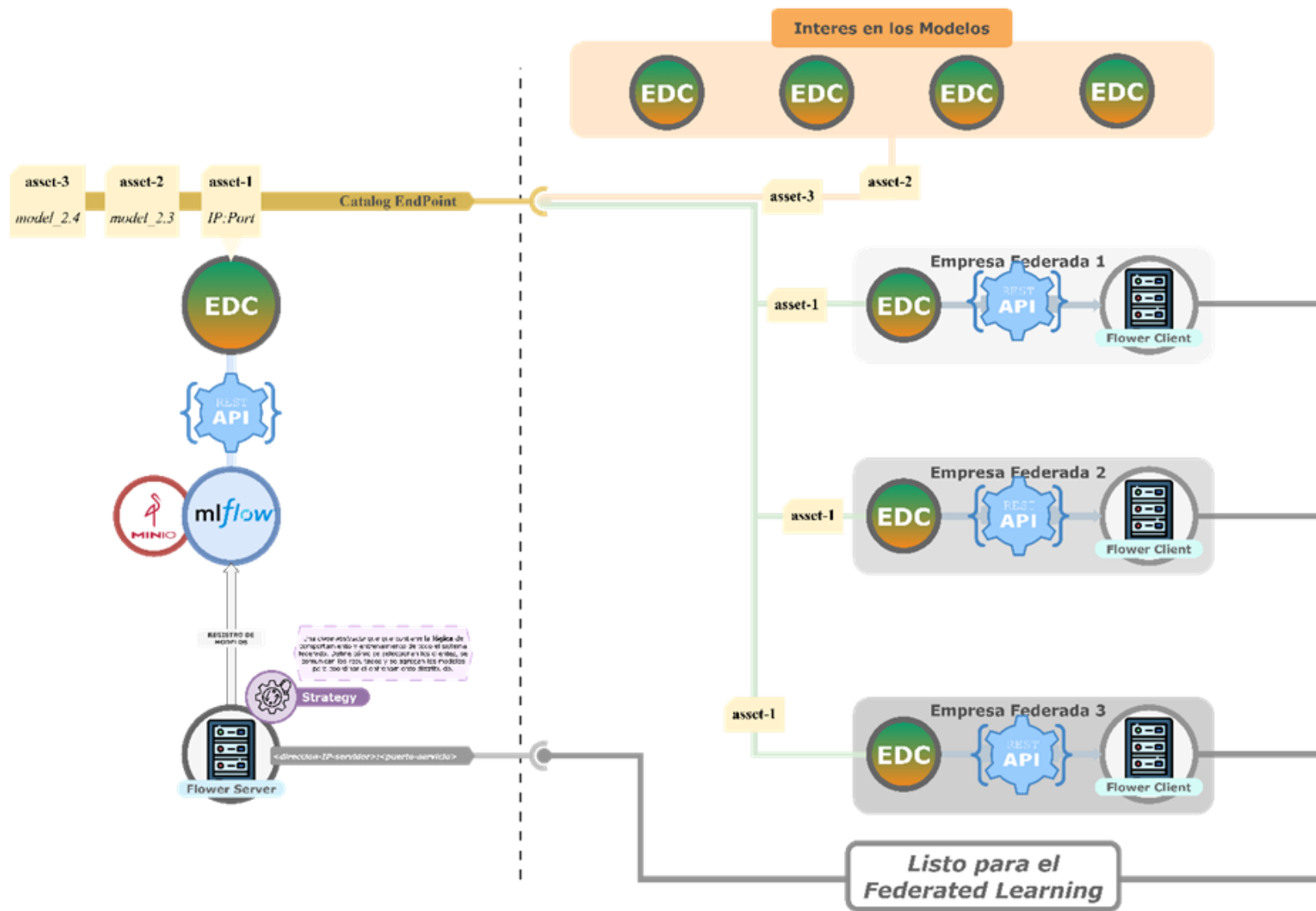
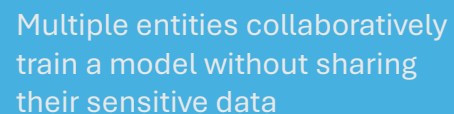


Following CX-0029-  
ProductCarbonFootprintRulebook

	Prop	"companyName"	= Sakana S.Coop
	Prop	"companyIds"	= urn:bpid:BPNL00000000GOI
	Prop	"productDescription"	= TAPA GREEN A9B10339833
	Prop	"productIds"	= urn:id:100000465
	Prop	"productCategoryCpc"	
	Prop	"productNameCompany"	= TAPA GREEN A9B10339833
4	SMC	"PcfEntity"	(40 elements)
	Prop	"declaredUnit"	= kilogram
	Prop	"unitaryProductAmount"	= 1.0
	Prop	"productMassPerDeclaredUnit"	= 4564.0
	Prop	"exemptedEmissionsPercent"	= 0.0
	Prop	"exemptedEmissionsDescription"	= No exemption
	Prop	"boundaryProcessesDescription"	
	Prop	"geographyCountrySubdivision"	= ES
	Prop	"geographyCountry"	= ES
	Prop	"geographyRegionOrSubregion"	= Europe
	Prop	"referencePeriodStart"	= 2024-01-01T00:00:01Z
	Prop	"referencePeriodEnd"	= 2024-12-31T00:00:01Z
	SML	"crossSectoralStandardsUsed"	(1 elements)
	SML	"productOrSectorSpecificRules"	(1 elements)
	Prop	"characterizationFactors"	
	Prop	"allocationRulesDescription"	= In accordance with Catena-X PCF Rulebook
	Prop	"allocationWasteIncineration"	= cut-off
	Prop	"primaryDataShare"	= 100
	SML	"secondaryEmissionFactorSources"	(1 elements)
	SMC	"DataQualityIndicator"	(6 elements)
	Prop	"packagingEmissionsIncluded"	
	Prop	"pcfExcludingBiogenic"	= 106.70

	Prop	"companyName"	= Goimek S.Coop
	Prop	"companyIds"	= urn:bpid:BPNL00000000GOI
	Prop	"productDescription"	= TAPA GREEN A9B10339833
	Prop	"productIds"	= urn:id:100000465
	Prop	"productCategoryCpc"	
	Prop	"productNameCompany"	= TAPA GREEN A9B10339833
4	SMC	"PcfEntity"	(40 elements)
	Prop	"declaredUnit"	= kilogram
	Prop	"unitaryProductAmount"	= 1.0
	Prop	"productMassPerDeclaredUnit"	= 4564.0
	Prop	"exemptedEmissionsPercent"	= 0.0
	Prop	"exemptedEmissionsDescription"	= No exemption
	Prop	"boundaryProcessesDescription"	
	Prop	"geographyCountrySubdivision"	= ES
	Prop	"geographyCountry"	= ES
	Prop	"geographyRegionOrSubregion"	= Europe
	Prop	"referencePeriodStart"	= 2024-01-01T00:00:01Z
	Prop	"referencePeriodEnd"	= 2024-12-31T00:00:01Z
	SML	"crossSectoralStandardsUsed"	(1 elements)
	SML	"productOrSectorSpecificRules"	(1 elements)
	Prop	"characterizationFactors"	
	Prop	"allocationRulesDescription"	= In accordance with Catena-X PCF Rulebook
	Prop	"allocationWasteIncineration"	= cut-off
	Prop	"primaryDataShare"	= 96.51
	SML	"secondaryEmissionFactorSources"	(1 elements)
	SMC	"DataQualityIndicator"	(6 elements)
	Prop	"packagingEmissionsIncluded"	= 0
	Prop	"pcfExcludingBiogenic"	= 51.63





## FUTURE WORK

- Keep Collaboration in Eclipse Tractus-X in Several Projects:
  - **Industry Core Hub**: Ease Use Case implementation
  - Eclipse Tractus-X EDC Expansion: Identity Hub / Wallet Implementation
- New Data Space Projects (SEDIA):
  - **ESAUTO-X**: Data Space for Spanish Automotive Sector within Catena-X
  - Demonstration and Test Infrastructure
  - Develop Spanish (Local) Services for Catena-X

 **ESAUTO-X**

## FUTURE WORK

- Open to new Industrial Services and collaborations on:
  - **Manufacturing**
  - **Logistics**
  - **AeroSpace**
  - **Health**
  - ...